



DOWNFLOW VENTILATED WORKSTATIONS & VENTILATED WET SPECIMEN STORAGE.

PRODUCT SHEET NO. 215

VERSION 3.1

FOR SAFE HANDLING OF AIRBORNE CONTAMINANTS

The **Opti-flow** downflow ventilated workstation is an effective form of local exhaust ventilation (LEV).

LEV is an engineering control system to reduce exposures to airborne contaminants such as dust, mist, fume, vapour or gas in a workplace.

There are three basic classifications of LEV; Enclosing, Receiving and Capturing devices.

A downflow ventilated workstation is defined as a simple '*capturing*' LEV and a ventilated wet specimen store is defined as a simple '*enclosing*' LEV as detailed within HSG258, the Health and Safety Executive guidelines to Controlling airborne contaminants at work.

SOME PROPERTIES OF AIRBORNE CONTAMINANTS

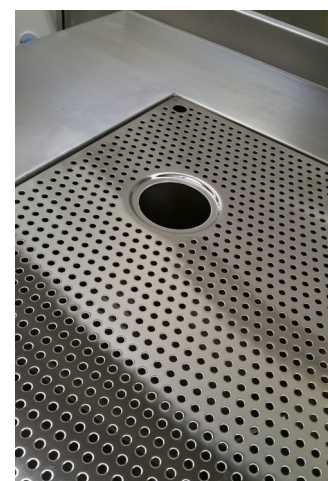
Name	Description and size	Visibility	Examples
Dust	Solid particles - can be supplied, eg powder handling, or process generated, eg crushing and grinding. Inhalable particle size 0.01 to 100µm. Respirable particle size below 10µm.	In diffuse light; <ul style="list-style-type: none">• Inhalable dust clouds are partially visible.• Respirable dust clouds are practically invisible at concentrations up to tens of mg/m3.	Grain dust, wood dust, silica floor.
Fume	Vapourised solid that has condensed. Particle size 0.001µm to 1µm.	Fume clouds tend to be dense. They are partially visible. Fume and smoke are generally more visible than equivalent concentrations of dust.	Rubber fume, solid fume, welding fume.
Mist	Liquid particles - process generated, eg by spraying. Particle size ranges 0.01 to 100µm. but the size distribution may change as volatile liquids evaporate.	As for dust.	Electroplating, paint sprays, steam.
Fibres	Solid particles - the length is several times the diameter. Particle size - as for dust.	As for dust.	Asbestos, glass fibre.
Vapour	The gaseous phase of a liquid or solid at room temperature. Behaves as a gas.	Usually invisible. At very high concentrations, a vapour-laden cloud may just be visible.	Styrene, petrol, acetone, mercury, iodine.
Gas	A gas at room temperature.	Usually invisible - some coloured at high concentrations.	Chlorine, carbon monoxide.



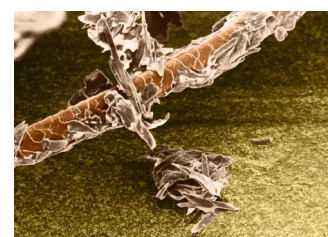
Seamless, 316 st.st for superior cleaning



Recirculating Air, in-built Fan Filter Units



Integral vented cup sink drain options



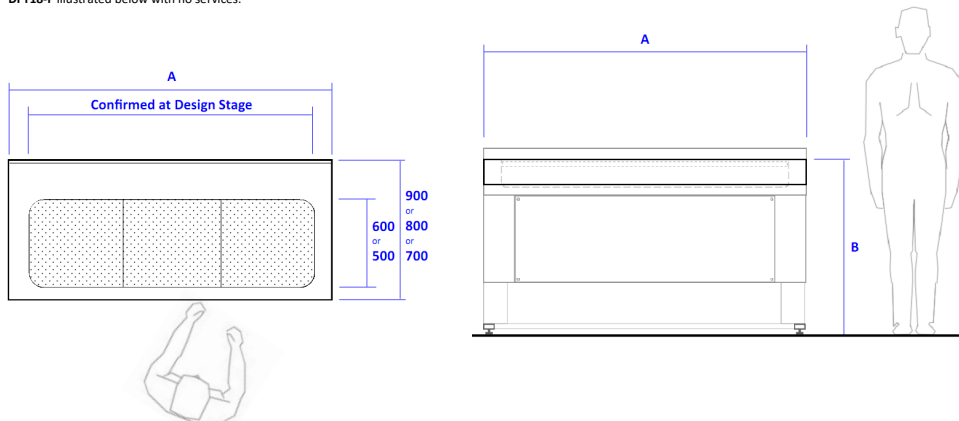
Animal Dander, SEM



STANDARD MODEL DESIGNATIONS AND DIMENSIONS

FULLY PERFORATED WORKING SURFACE

DFT18-F illustrated below with no services.



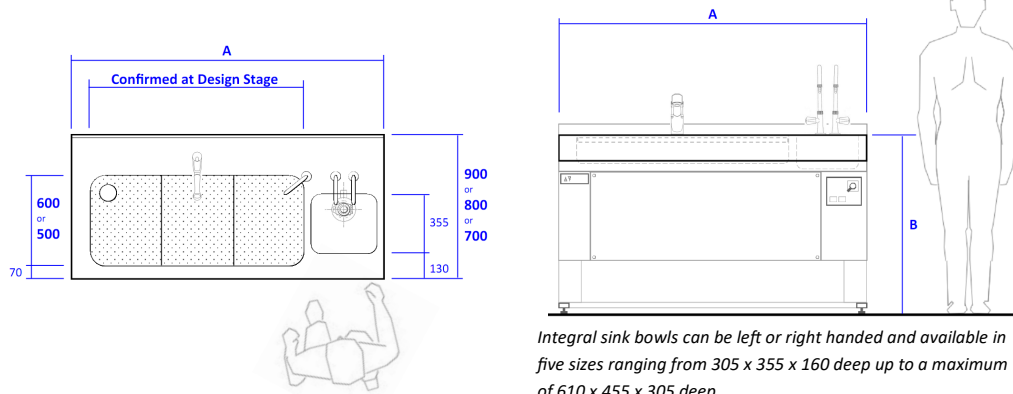
Model	Model Description	A mm	B mm
DFT10-F	Seamless, one-piece 316 st.st work surface with integral rear upstand. Flush fitting perforated sump covers. Fixed height support assembly 304 st.st. All satin polished finish. Removable front access panel for services and duct connections.	1000	900
DFT10-V	All as described above, except with in-built concealed electrical height adjustment.		760 to 1100
DFT12-F	Seamless, one-piece 316 st.st work surface with integral rear upstand. Flush fitting perforated sump covers. Fixed height support assembly 304 st.st. All satin polished finish. Removable front access panel for services and duct connections.	1200	900
DFT12-V	All as described above, except with in-built concealed electrical height adjustment.		760 to 1100
DFT15-F	Seamless, one-piece 316 st.st work surface with integral rear upstand. Flush fitting perforated sump covers. Fixed height support assembly 304 st.st. All satin polished finish. Removable front access panel for services and duct connections.	1500	900
DFT15-V	All as described above, except with in-built concealed electrical height adjustment.		760 to 1100
DFT18-F	Seamless, one-piece 316 st.st work surface with integral rear upstand. Flush fitting perforated sump covers. Fixed height support assembly 304 st.st. All satin polished finish. Removable front access panel for services and duct connections.	1800	900
DFT18-V	All as described above, except with in-built concealed electrical height adjustment.		760 to 1100
DFT20-F	Seamless, one-piece 316 st.st work surface with integral rear upstand. Flush fitting perforated sump covers. Fixed height support assembly 304 st.st. All satin polished finish. Removable front access panel for services and duct connections.	2000	900
DFT20-V	All as described above, except with in-built concealed electrical height adjustment.		760 to 1100
DFT25-F	Seamless, one-piece 316 st.st work surface with integral rear upstand. Flush fitting perforated sump covers. Fixed height support assembly 304 st.st. All satin polished finish. 2No. Removable front access panels for services and duct connections.	2500	900
DFT25-V	All as described above, except with in-built concealed electrical height adjustment.		760 to 1100
DFT30-F	Seamless, one-piece 316 st.st work surface with integral rear upstand. Flush fitting perforated sump covers. Fixed height support assembly 304 st.st. All satin polished finish. 2No. Removable front access panels for services and duct connections.	3000	900
DFT30-V	All as described above, except with in-built concealed electrical height adjustment.		760 to 1100



STANDARD MODEL DESIGNATIONS AND DIMENSIONS

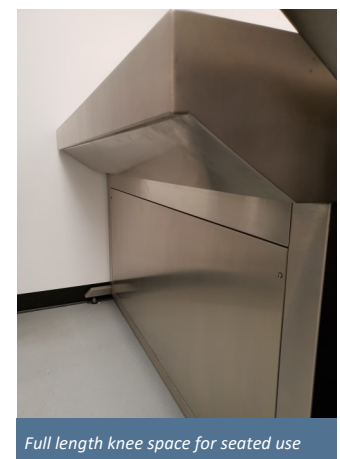
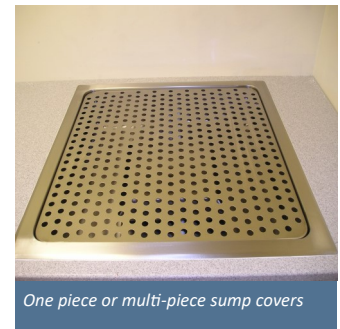
PERFORATED WORKING SURFACE WITH SINK

DFT18-S-V illustrated below with vented cup-sink drain point, flexible trigger shower and sink bowl pathological macerator.



Integral sink bowls can be left or right handed and available in five sizes ranging from 305 x 355 x 160 deep up to a maximum of 610 x 455 x 305 deep.

Model	Model Description	A mm	B mm
DFT12-S-F	Seamless, one-piece 316 st.st work surface with integral rear upstand and sink bowl. Flush fitting perforated sump covers. Fixed height support assembly 304 st.st. All satin polished finish. Removable front access panel for services and duct connections.	1200	900
DFT12-S-V	All as described above, except with in-built concealed electrical height adjustment.		760 to 1100
DFT15-S-F	Seamless, one-piece 316 st.st work surface with integral rear upstand and sink bowl. Flush fitting perforated sump covers. Fixed height support assembly 304 st.st. All satin polished finish. Removable front access panel for services and duct connections.	1500	900
DFT15-S-V	All as described above, except with in-built concealed electrical height adjustment.		760 to 1100
DFT18-S-F	Seamless, one-piece 316 st.st work surface with integral rear upstand and sink bowl. Flush fitting perforated sump covers. Fixed height support assembly 304 st.st. All satin polished finish. Removable front access panel for services and duct connections.	1800	900
DFT18-S-V	All as described above, except with in-built concealed electrical height adjustment.		760 to 1100
DFT20-S-F	Seamless, one-piece 316 st.st work surface with integral rear upstand and sink bowl. Flush fitting perforated sump covers. Fixed height support assembly 304 st.st. All satin polished finish. Removable front access panel for services and duct connections.	2000	900
DFT20-S-V	All as described above, except with in-built concealed electrical height adjustment.		760 to 1100
DFT25-S-F	Seamless, one-piece 316 st.st work surface with integral rear upstand and sink bowl. Flush fitting perforated sump covers. Fixed height support assembly 304 st.st. All satin polished finish. 2No. Removable front access panels for services and duct connections.	2500	900
DFT25-S-V	All as described above, except with in-built concealed electrical height adjustment.		760 to 1100
DFT30-S-F	Seamless, one-piece 316 st.st work surface with integral rear upstand and sink bowl. Flush fitting perforated sump covers. Fixed height support assembly 304 st.st. All satin polished finish. 2No. Removable front access panels for services and duct connections.	3000	900
DFT30-S-V	All as described above, except with in-built concealed electrical height adjustment.		760 to 1100

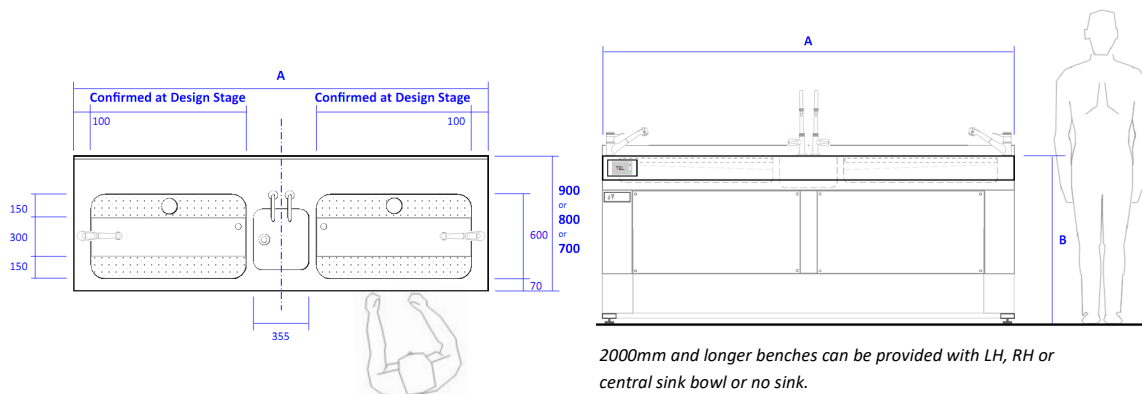


DOWNFLOW VENTILATED WORKSTATIONS & VENTILATED WET SPECIMEN STORAGE.

STANDARD MODEL DESIGNATIONS AND DIMENSIONS

STAINING BENCH

DFSB25-V illustrated below with 2x vented cup-sink drain points, 2x flexible trigger showers and airflow alarm.



Model	Model Description	A mm	B mm
DFSB15-F	Seamless, one-piece 316 st.st work surface with integral rear upstand and sink bowl. Flush fitting perforated sump covers. Fixed height support assembly 304 st.st. All satin polished finish. Removable front access panel for services and duct connections.	1500	900
DFSB15-V	All as described above, except with in-built concealed electrical height adjustment.		760 to 1100
DFSB18-F	Seamless, one-piece 316 st.st work surface with integral rear upstand and sink bowl. Flush fitting perforated sump covers. Fixed height support assembly 304 st.st. All satin polished finish. Removable front access panel for services and duct connections.	1800	900
DFSB18-V	All as described above, except with in-built concealed electrical height adjustment.		760 to 1100
DFSB20-F	Seamless, one-piece 316 st.st work surface with integral rear upstand and sink bowl. Flush fitting perforated sump covers. Fixed height support assembly 304 st.st. All satin polished finish. Removable front access panel for services and duct connections.	2000	900
DFSB20-V	All as described above, except with in-built concealed electrical height adjustment.		760 to 1100
DFSB25-F	Seamless, one-piece 316 st.st work surface with integral rear upstand and sink bowl. Flush fitting perforated sump covers. Fixed height support assembly 304 st.st. All satin polished finish. 2No. Removable front access panels for services and duct connections.	2500	900
DFSB25-V	All as described above, except with in-built concealed electrical height adjustment.		760 to 1100
DFSB30-F	Seamless, one-piece 316 st.st work surface with integral rear upstand and sink bowl. Flush fitting perforated sump covers. Fixed height support assembly 304 st.st. All satin polished finish. 2No. Removable front access panels for services and duct connections.	3000	900
DFSB30-V	All as described above, except with in-built concealed electrical height adjustment.		760 to 1100



DFSB25-F without sink



Formalin Dispensing System options



Integral base storage cupboard options



Interchangeable perforated sump covers



OPTI-PHARMA (UK) LIMITED, Pontefract, West Yorkshire, WF8 3QX

Tel: +44 (0)1977 791302

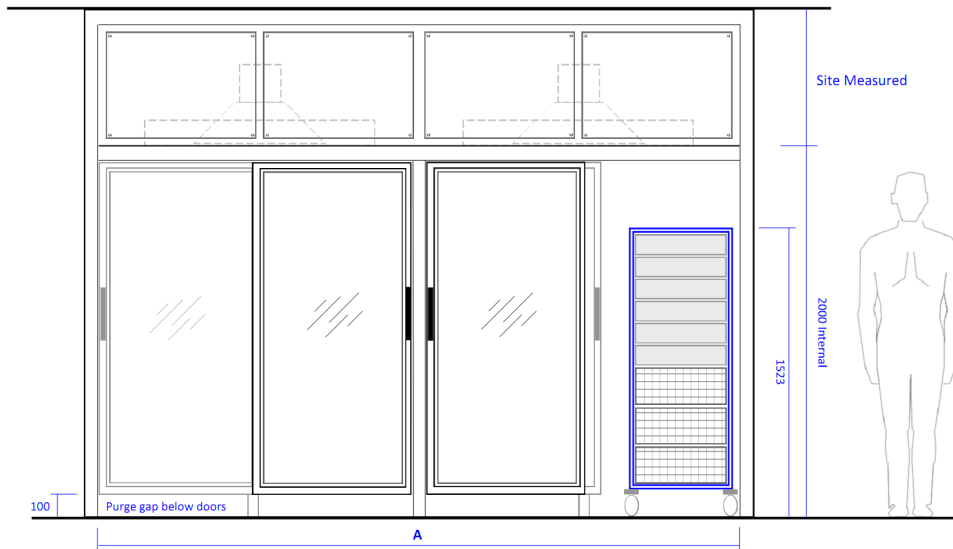
www.optipharmauk.com

DOWNFLOW VENTILATED WORKSTATIONS & VENTILATED WET SPECIMEN STORAGE.

STANDARD MODEL DESIGNATIONS AND DIMENSIONS

VENTILATED WET SPECIMEN STORAGE

VWSS37-D illustrated below requiring 2x 160dia duct connections.



Model	Model Description	A mm
VWSS8-D	Single bay, free-standing, all from satin polished 316 st.st. Single, framed 6mm toughened safety glass door, hinged. High level front access panel for light and duct connection. Standard internal depth of 600mm. Double depth option available for high density storage.	800
VWSS8-R	All as described above, except top box section replaced with recirculating air Fan Filter Unit.	
VWSS15-D	Two bay, free-standing, all from satin polished 316 st.st. Two, framed 6mm toughened safety glass doors, top-hung sliding. High level front access panel for light and duct connection. Standard internal depth of 600mm. Double depth option available for high density storage.	1500
VWSS15-R	All as described above, except top box section replaced with recirculating air Fan Filter Unit.	
VWSS23-D	Three bay, free-standing, all from satin polished 316 st.st. Three, framed 6mm toughened safety glass doors, top-hung sliding. High level front access panel for light and duct connection. Standard internal depth of 600mm. Double depth option available for high density storage.	2300
VWSS23-R	All as described above, except top box section replaced with recirculating air Fan Filter Unit.	
VWSS30-D	Four bay, free-standing, all from satin polished 316 st.st. Three, framed 6mm toughened safety glass doors, top-hung sliding. High level front access panel for light and duct connection. Standard internal depth of 600mm. Double depth option available for high density storage.	3000
VWSS30-R	All as described above, except top box section replaced with recirculating air Fan Filter Units.	
VWSS37-D	Five bay, free-standing, all from satin polished 316 st.st. Four, framed 6mm toughened safety glass doors, top-hung sliding. High level front access panel for light and duct connection. Standard internal depth of 600mm. Double depth option available for high density storage.	3700
VWSS37-R	All as described above, except top box section replaced with recirculating air Fan Filter Units.	



2x VWSS37-D installed side by side



VWSS8-R and DFT20-S-F with sluice



Internal lighting including LED options



Various single and twin mobile trolleys



OPTI-PHARMA (UK) LIMITED, Pontefract, West Yorkshire, WF8 3QX

Tel: +44 (0)1977 791302

www.optipharmauk.com

WHY CHOOSE **Opti-Pharma**?

On a daily basis, every client that comes to Opti-Pharma UK requires some kind of support in finding a solution to their own problem.

The company holds the firm belief that investing in others can reap great rewards. It is with this ethos in mind that we lead the company into a time where considering the environment plays a big part in the way we live and work. The Company's aim is to provide a personal yet professional service to all its customers.

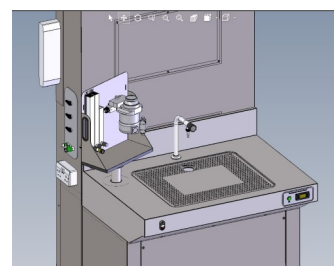
- We sell laboratory furniture.
- We sell fume cupboards and accessories.
- We design air flow systems for your laboratory.
- We service and repair your fume cupboards.
- We design and build large and small facilities.

All testing is undertaken to national standards so you can carry on using your equipment in confidence. We regularly perform:

- Airflow measurement.
- DOP analysis.
- Smoke visuals.
- KI Discus containment testing.
- Filter testing.
- Particle count monitoring.
- Sound & Light evaluation.
- Formalin decontamination.

COMPREHENSIVE CLIENT PORTFOLIO

We can boast an extensive Client base which includes leading Pharmaceutical Companies, Universities, Medical Schools and many other Research Laboratories, Engineering and General Industrial Firms.



In-house 3D modelling and CAD design



Negative and Positive Pressure Isolators



Custom Enclosures including ATEX rated



All classes of Biohazard Safety Cabinets



Laboratory Fume Cupboards

